


# **80 Series Printer**

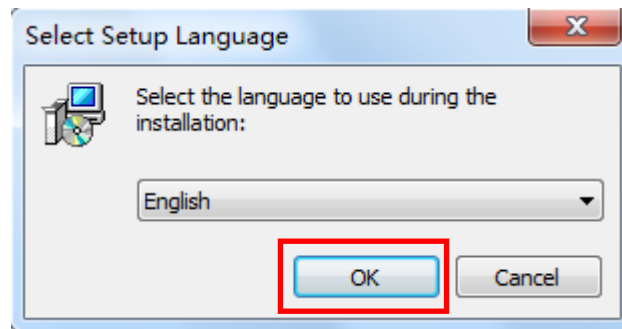
## **Driver Setup Manual**

---

## I. Windows Driver Installation

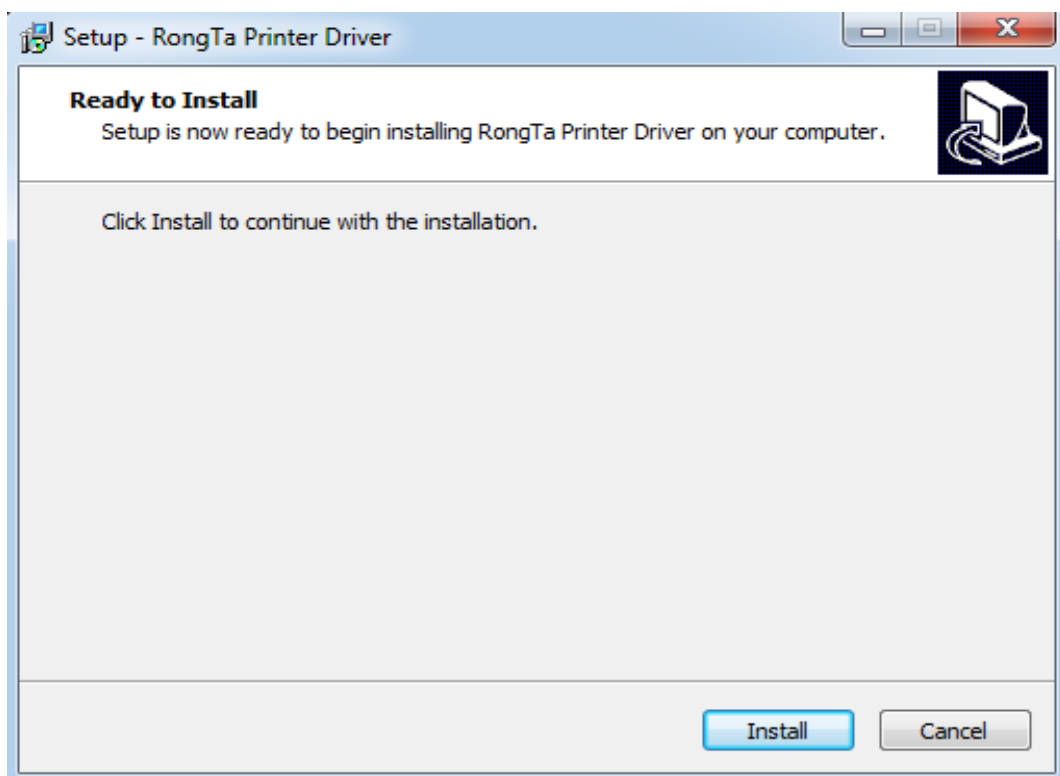
Double click the installation icon  RongTaDriverInstall

Then, it will show as below picture:



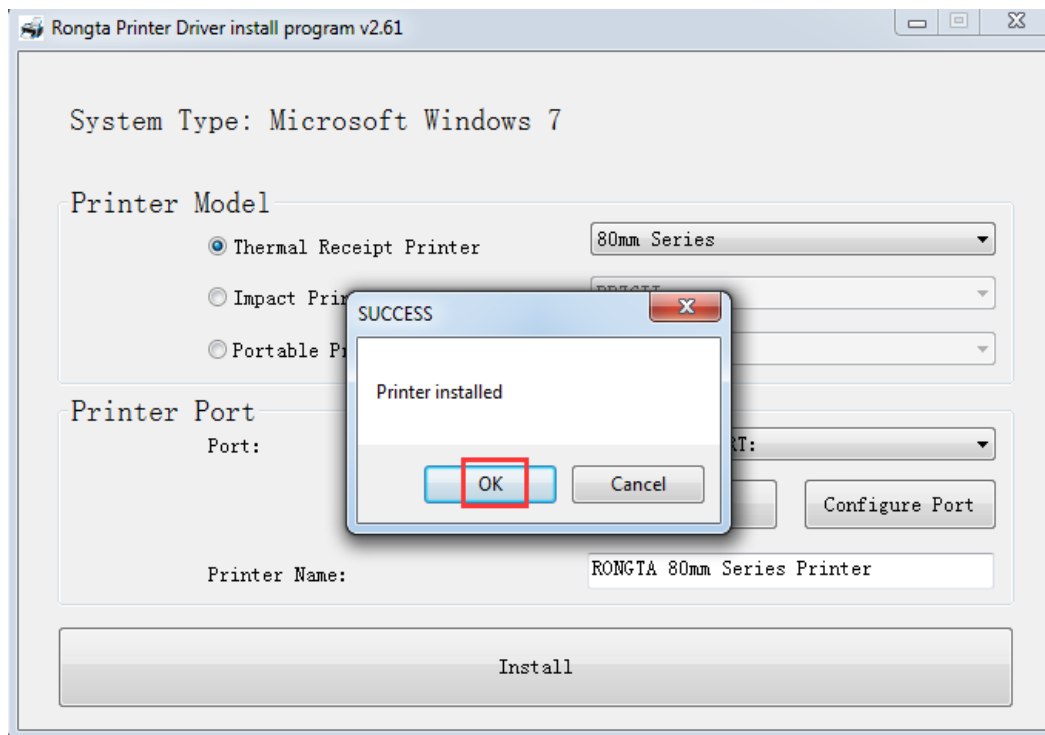
Select the language, then click "OK".

Then, it will show as below picture:



Then click "Install".

---



Select “OK”, and then click “Exit”. Wait until it shows the below picture, it means, the printer driver has been installed successfully.

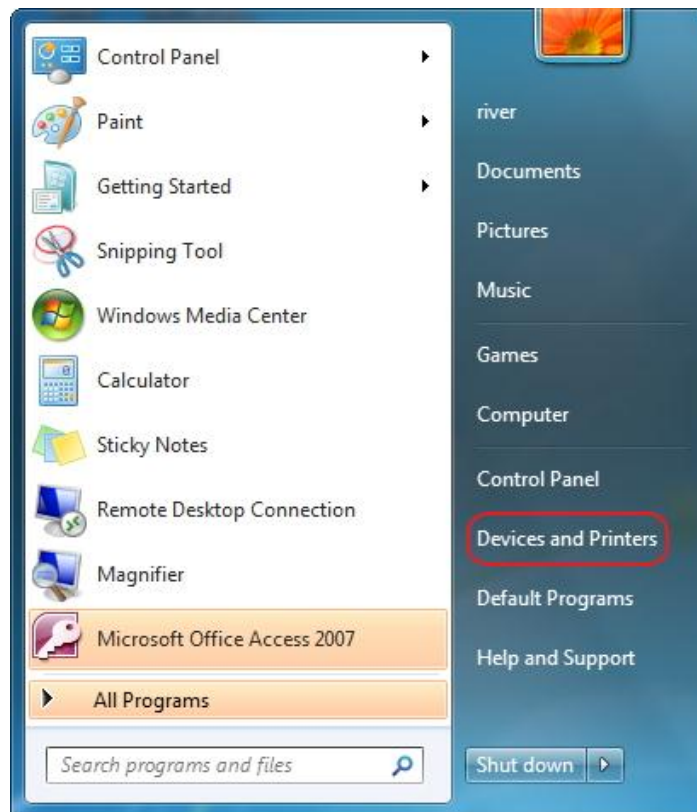
Then click “Finish” to finish driver installation.



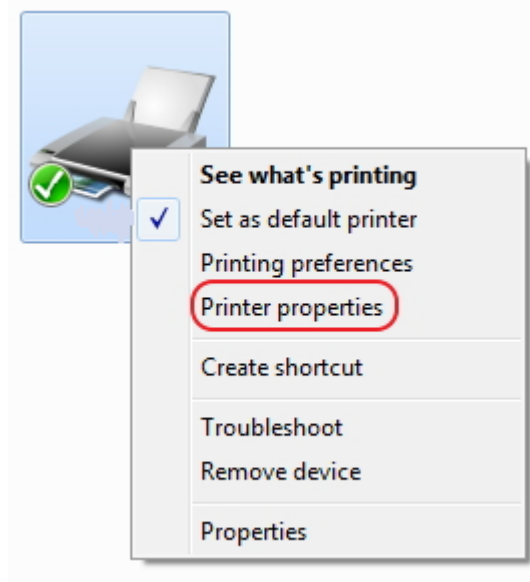
---

## II. Printer Setup and Testing

### 2.1 Setup Printer Properties



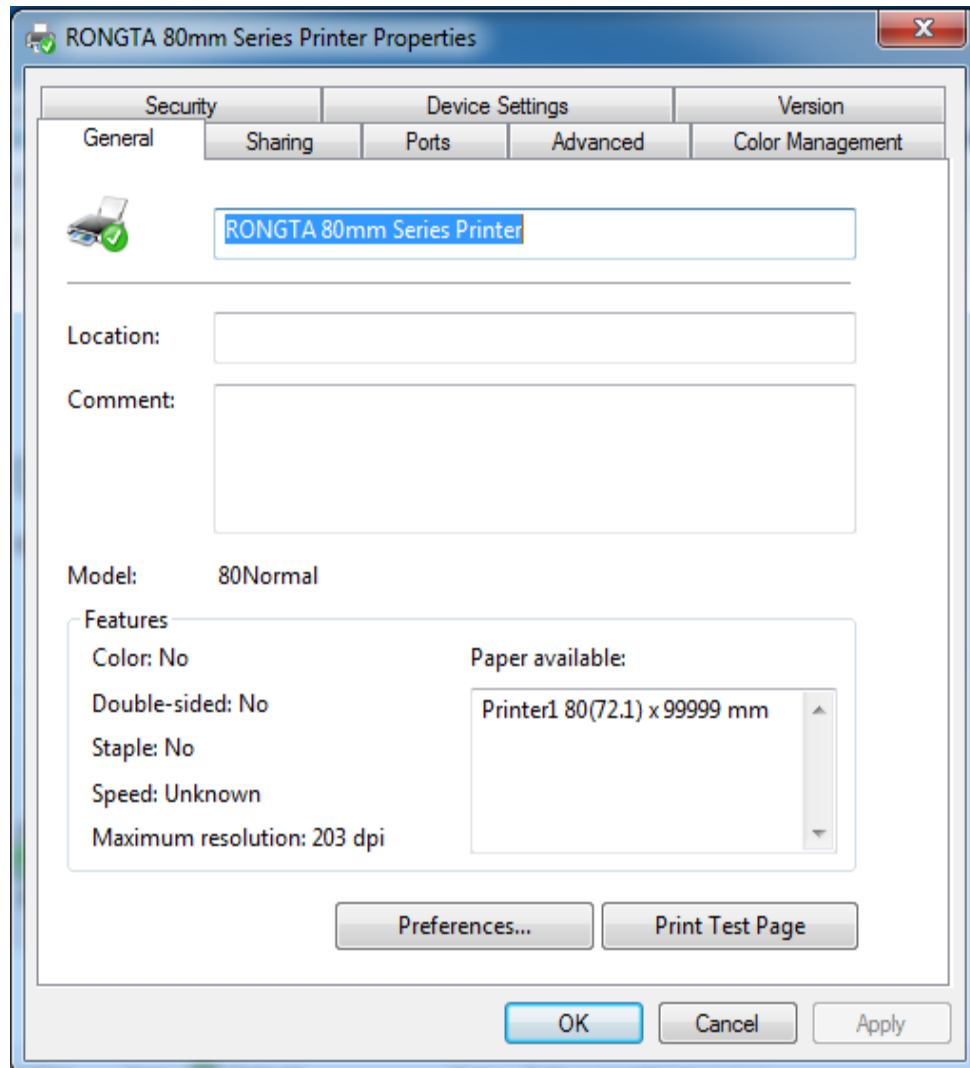
Click Start Menu, and then click “Devices and Printers”, just as above picture



Right-Click “RONG TA 80mm Series Printer” and then click “Printer properties”

And then, it will show as below picture:

---

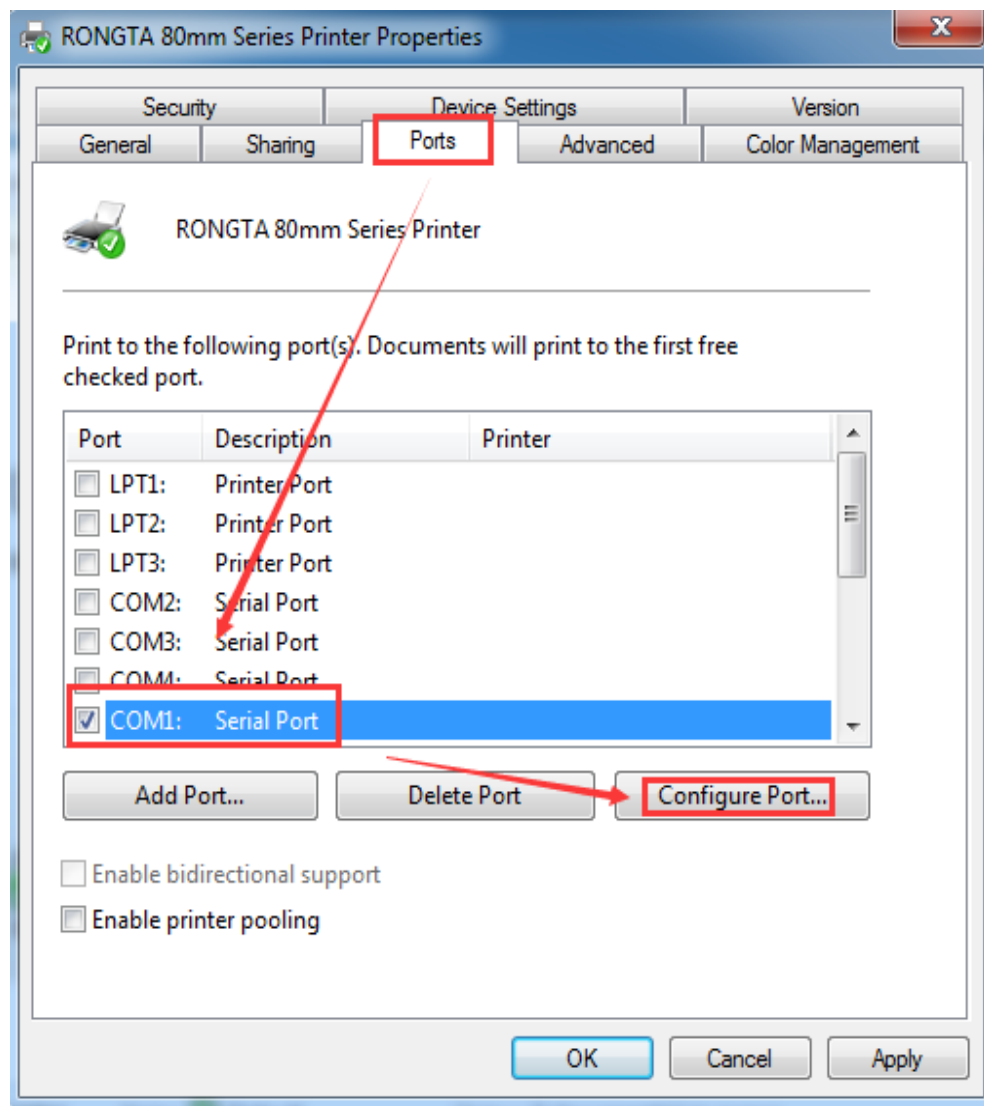


On RONG TA 80mm Series Printer Properties “General”, you could configure the printer communication port, such as Serial port, Parallel port and USB port. You also could set the paper specification, beeper etc.

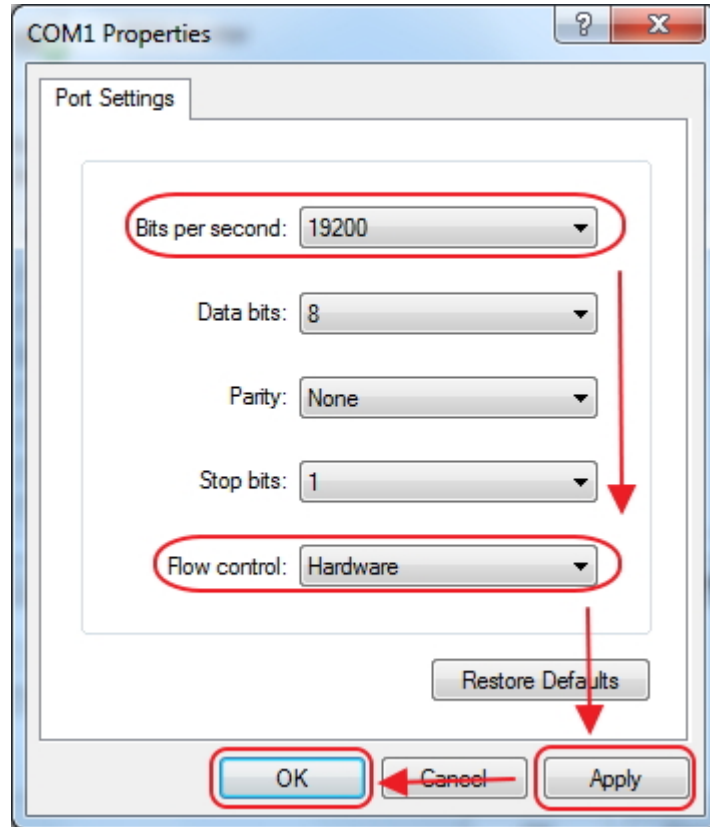
After all the setting, you could start to print the testing page.

## 2.2 Serial Port Configuration

On RONG TA 80mm Series Printer Properties “Ports”, you could configure the Serial Port to communicate printer to computer, see the below picture:



Select available computer COM port, such as "COM1" as the above picture, and then click "Configure Port" to set the detailed parameter.



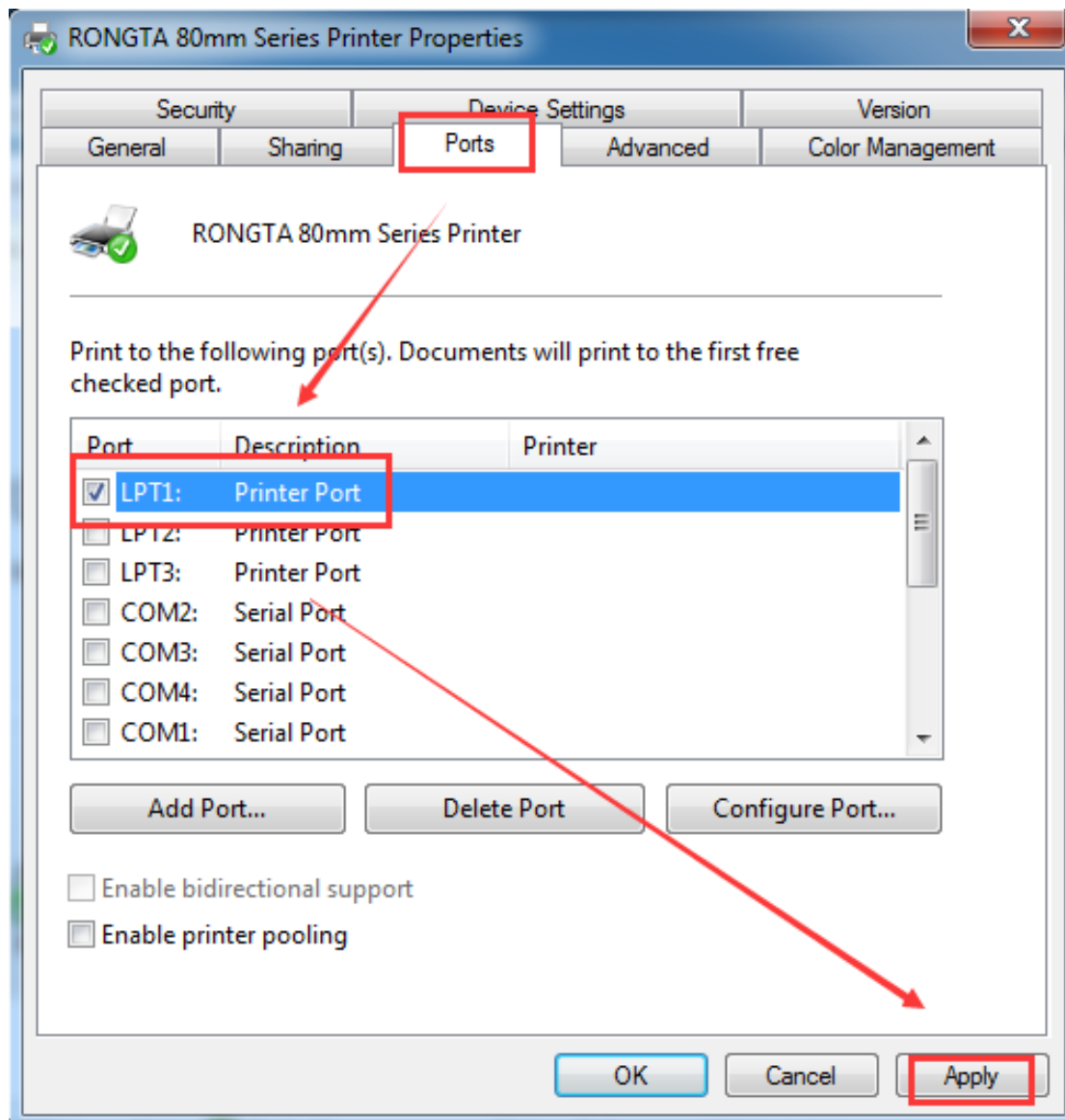
"Bit per second" means Serial port baud rate, it must same as printer setting. For example, if printer baud rate is "19200bsp", then you must select "19200" on "Bit per second", just as above picture. (Factory default baud rate is 19200bps)

"Flow control", we recommend select "Hardware"

After setting, click "Apply", and then click "OK".

## 2.3 Parallel Port Configuration

On RONG TA 80mm Series Printer Properties "Ports", you could configure the Parallel Port to communicate printer to computer, see the below picture:

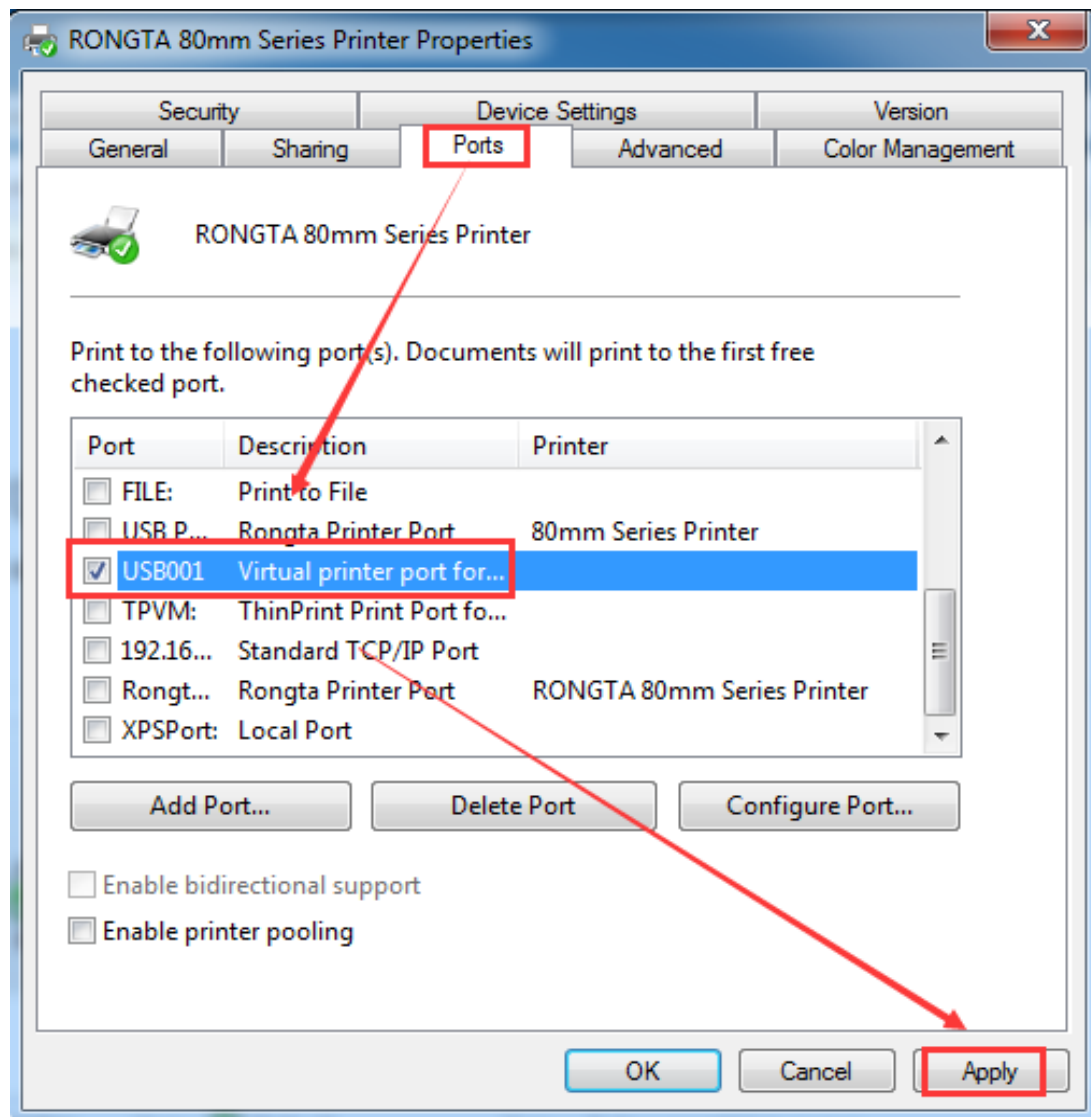


Select available computer LPT port, such as the above picture shows “LPT1”, then click “Apply” to finish the configuration.

## 2.4 USB Port Configuration

On RONG TA 80mm Series Printer Properties “Ports”, you could configure the USB Port to communicate printer to computer, see the below picture:

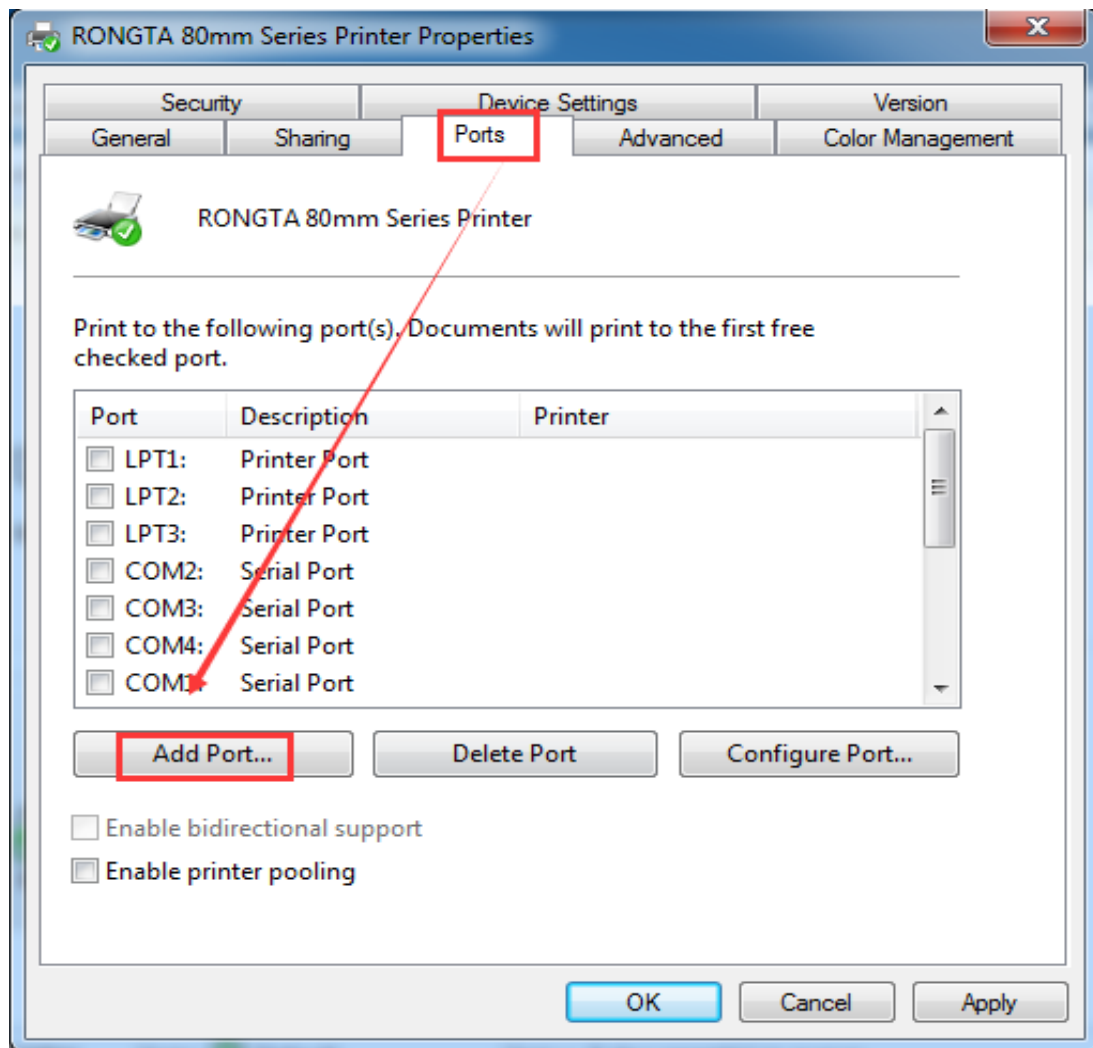




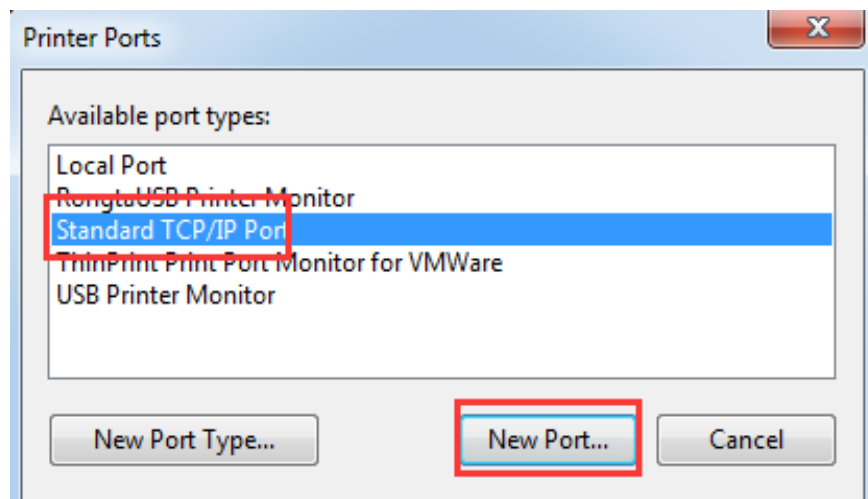
Select available computer USB communication port, such as the above picture shows “USB001”, and then click “Apply” to finish the configuration.

## 2.5 Ethernet Port Configuration

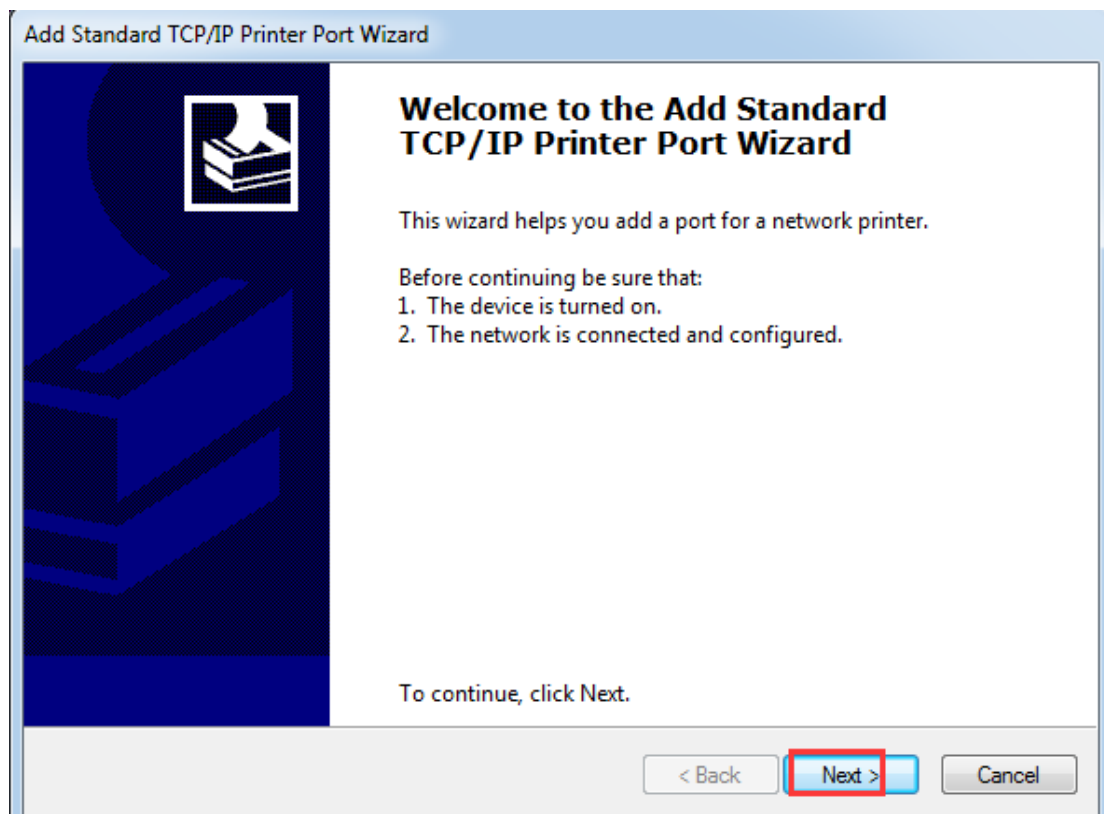
On RONG TA 80mm Series Printer Properties “Ports”, you could configure the Ethernet Port to Communicate printer to computer, see the below picture:



Click “port” and then click the “Add port”, then shows as below picture:



Select” Standard TCP/IP Port”, and click” New Port...”, then shows as below picture:



Then click “Next”.

Enter the IP address of the printer Ethernet port, Factory default IP is “192.168.1.87”.

**Add Standard TCP/IP Printer Port Wizard**

**Additional port information required**  
The device could not be identified.

The device is not found on the network. Be sure that:

1. The device is turned on.
2. The network is connected.
3. The device is properly configured.
4. The address on the previous page is correct.

If you think the address is not correct, click Back to return to the previous page. Then correct the address and perform another search on the network. If you are sure the address is correct, select the device type below.

Device Type

☒ Standard    Generic Network Card

☐ Custom    Settings...

< Back    **Next >**    Cancel

When it shows as below picture, select “Standard” and then click “Next”.

**Add Standard TCP/IP Printer Port Wizard**

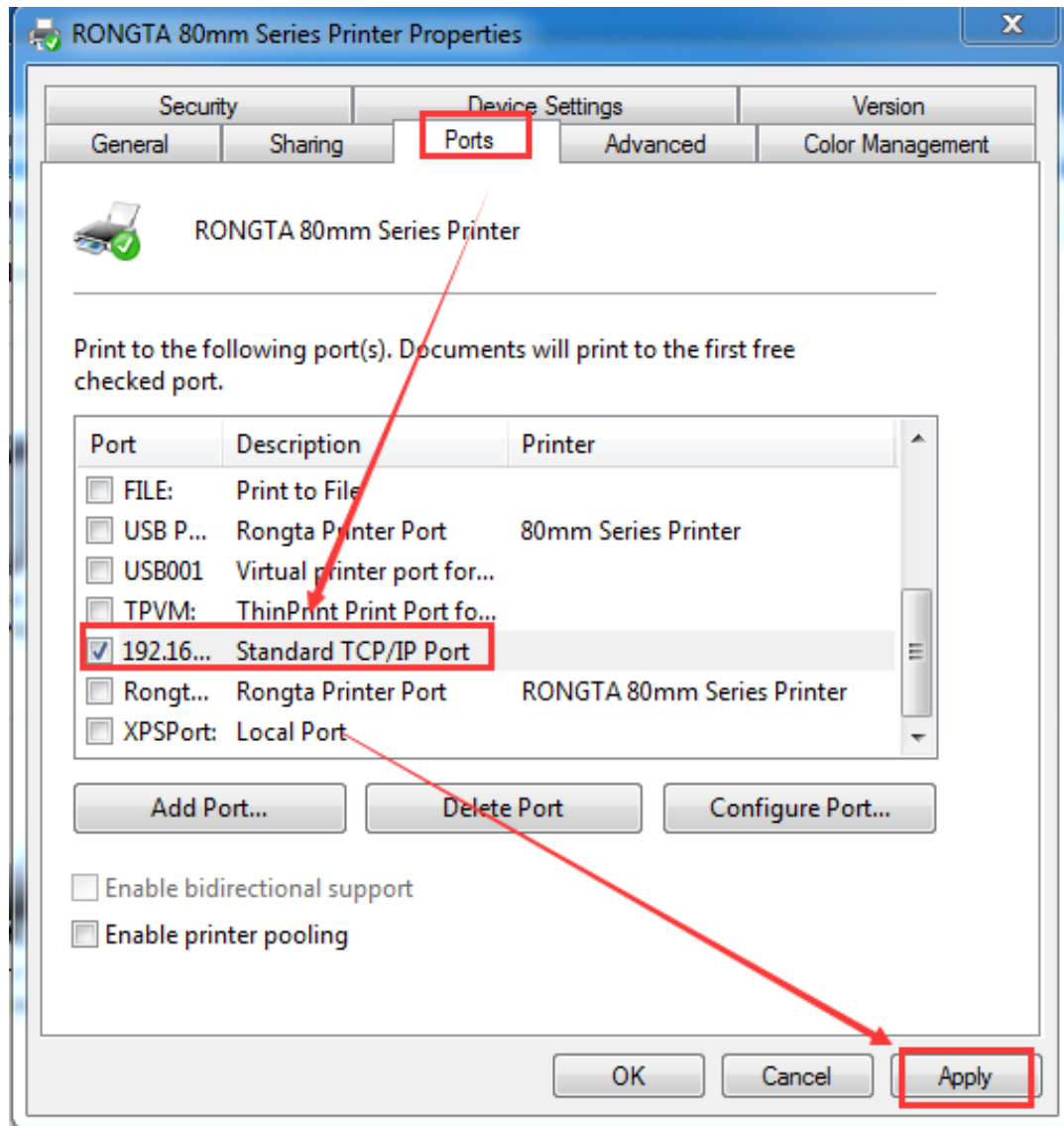
**Completing the Add Standard TCP/IP Printer Port Wizard**

You have selected a port with the following characteristics.

SNMP:	No
Protocol:	RAW, Port 9100
Device:	192.168.1.87
Port Name:	192.168.1.87
Adapter Type:	Generic Network Card

To complete this wizard, click Finish.

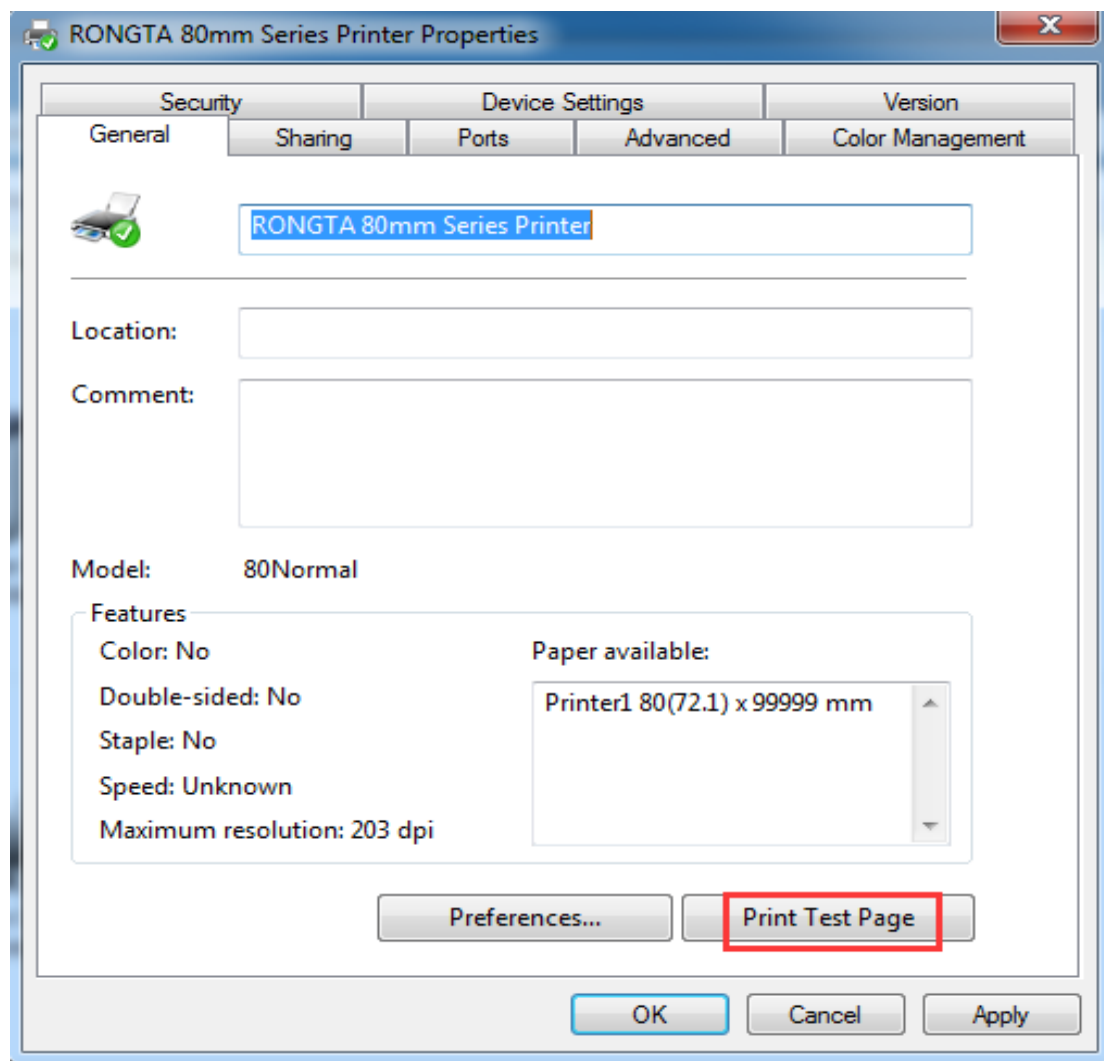
< Back    **Finish**    Cancel



## 2.6 Printing Test Page

After finishing port configuration, we start to print test page.

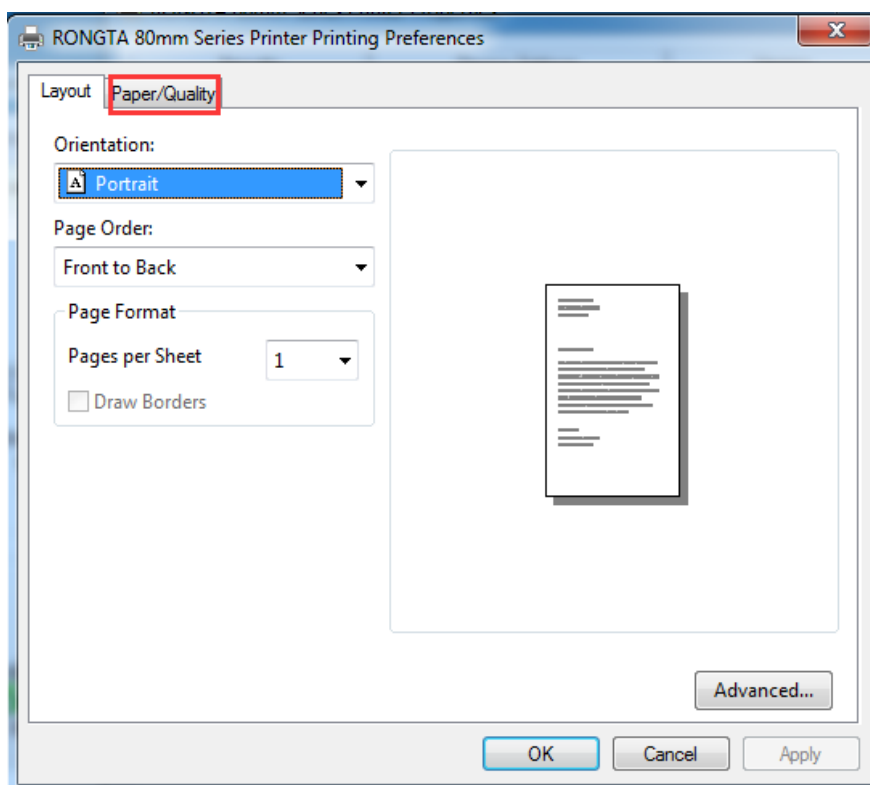
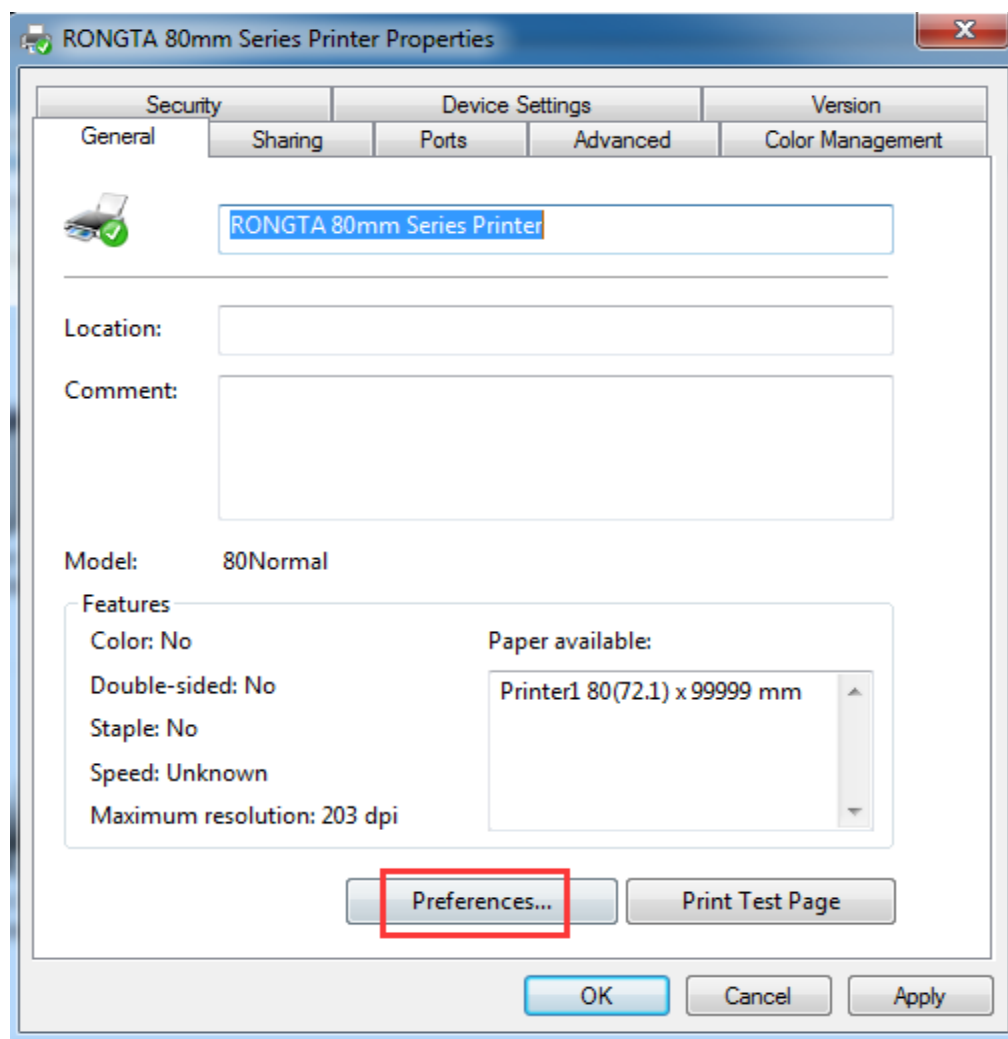
On RONG TA 80mm Printer Properties “General”:

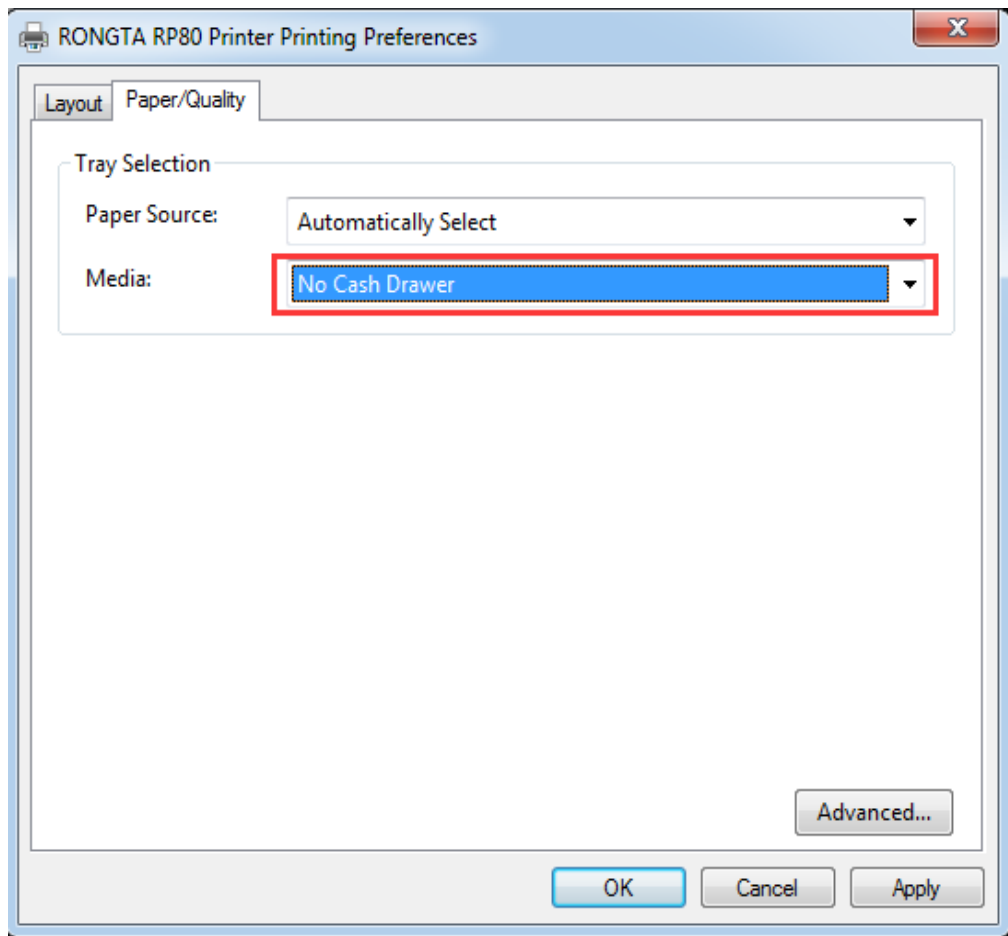


Click “Print Test Page”, the printer will print test page, which means the printer has been connected with computer successfully and the port configuration is correct.

## 2.7 Other Properties and Function Configuration

You could set the paper specification etc., please refer to the follows:





**Cash Drawer Setting:**

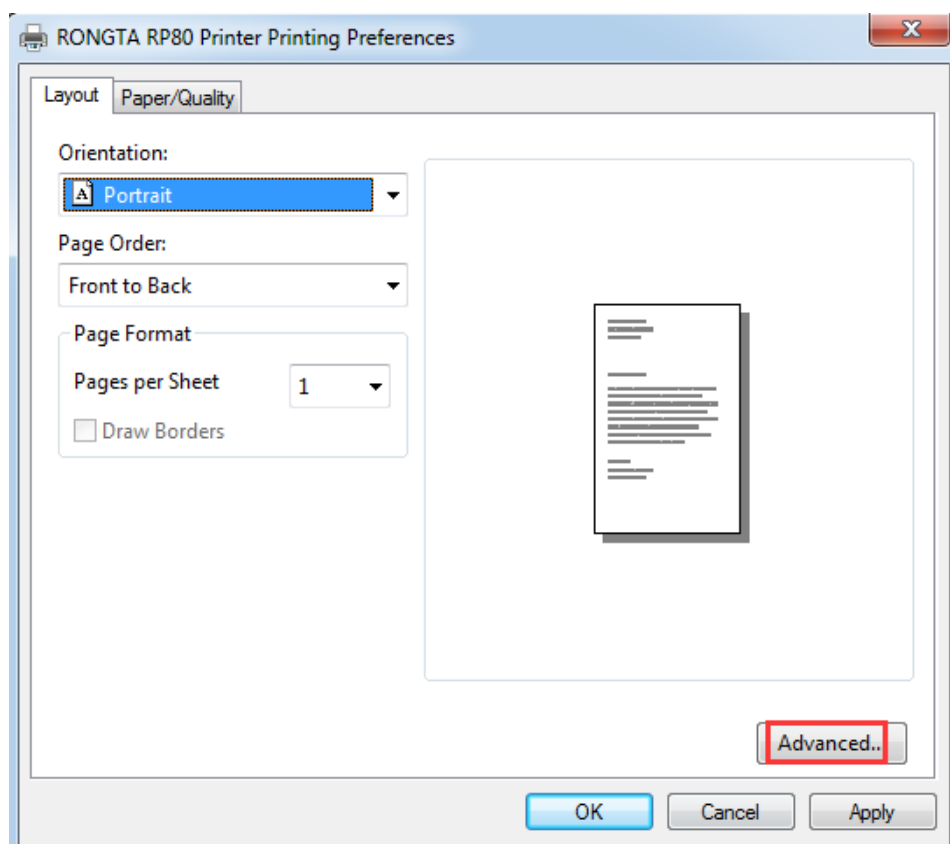
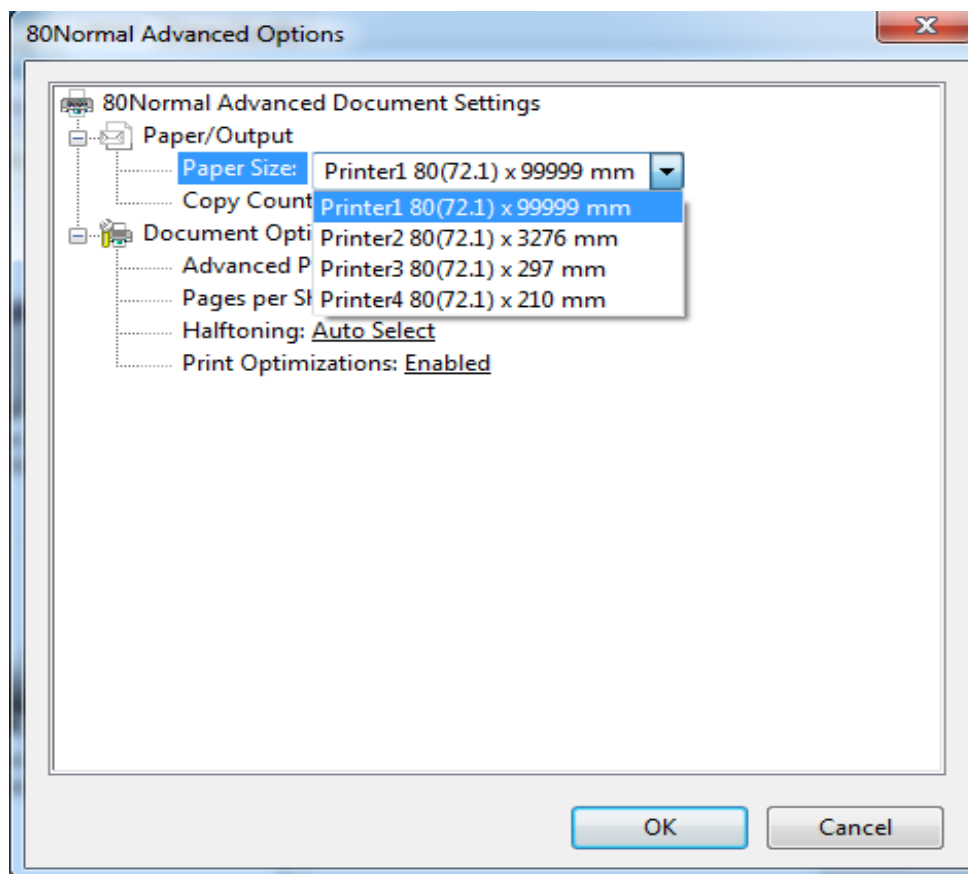
No Cash Drawer: Cash Drawer is not connected.

Cash Drawer Before Printing: Open cash drawer before printing

Cash Drawer After Printing: Open cash drawer after printing

---





---

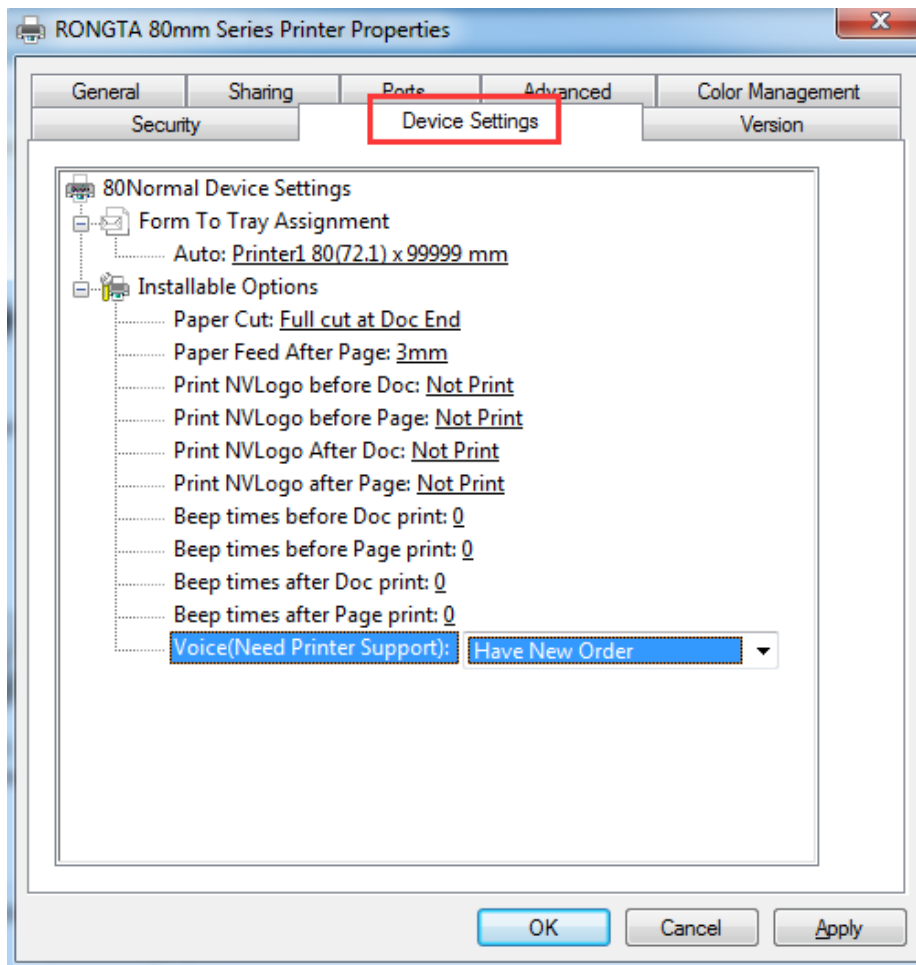
### Paper Size:

- 1、 80 x 210 mm
- 2、 80 x 297 mm
- 3、 80 x 3276 mm

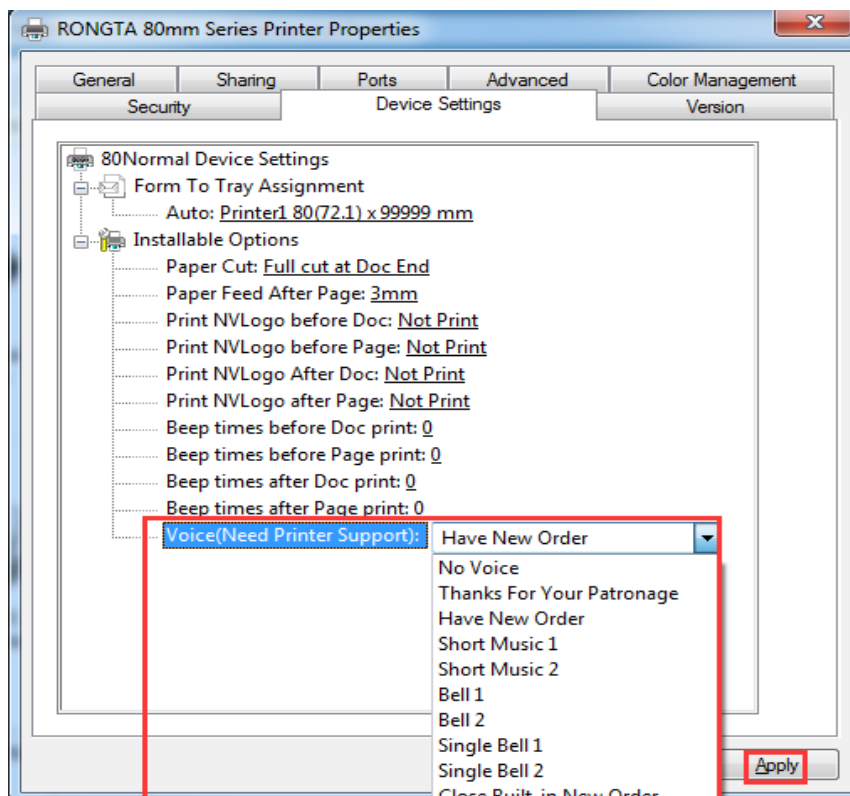
## 2.8 speech function

This feature only supports partial models.

1. Select the printer property and click "device Settings".



2. Click on the voice function, select the ringtone that needs to be set, and click apply.



3. Click on the routine, select the "print test page", and there will be voice broadcast when printing.

